

LS Heinze
Zoology &
Evolutionary Biology
January, 2019

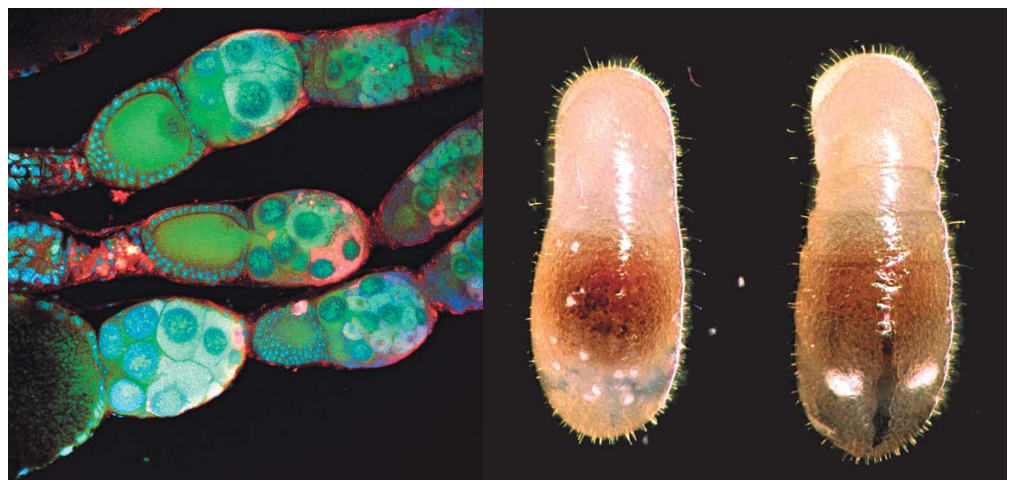
Workgroup PD Dr. Jan Oettler B.Sc./M.Sc. thesis

“Ants have the most complicated social organization on earth next to humans.” –
E. O. Wilson

Our workgroup is looking for motivated students (B.Sc./M.Sc.) who are interested in the development of social insects!

What are we doing?

We are working with the tropical ant *Cardiocondyla obscurior* to study caste determination. To investigate this further we are using modern techniques like RNA/DNA Isolation, qPCR, fluorescent in situ hybridization (FISH), confocal imaging, gene knockdown via small interfering RNA (siRNA), behavioral assays and RNAseq.



If you are interested to work with these techniques and want 1 to 1 supervision and mentoring, please contact:

Tobias.Weichselgartner@ur.de