

INDEED

Innovation for Dementia in the Danube Region

An example of transnational collaboration

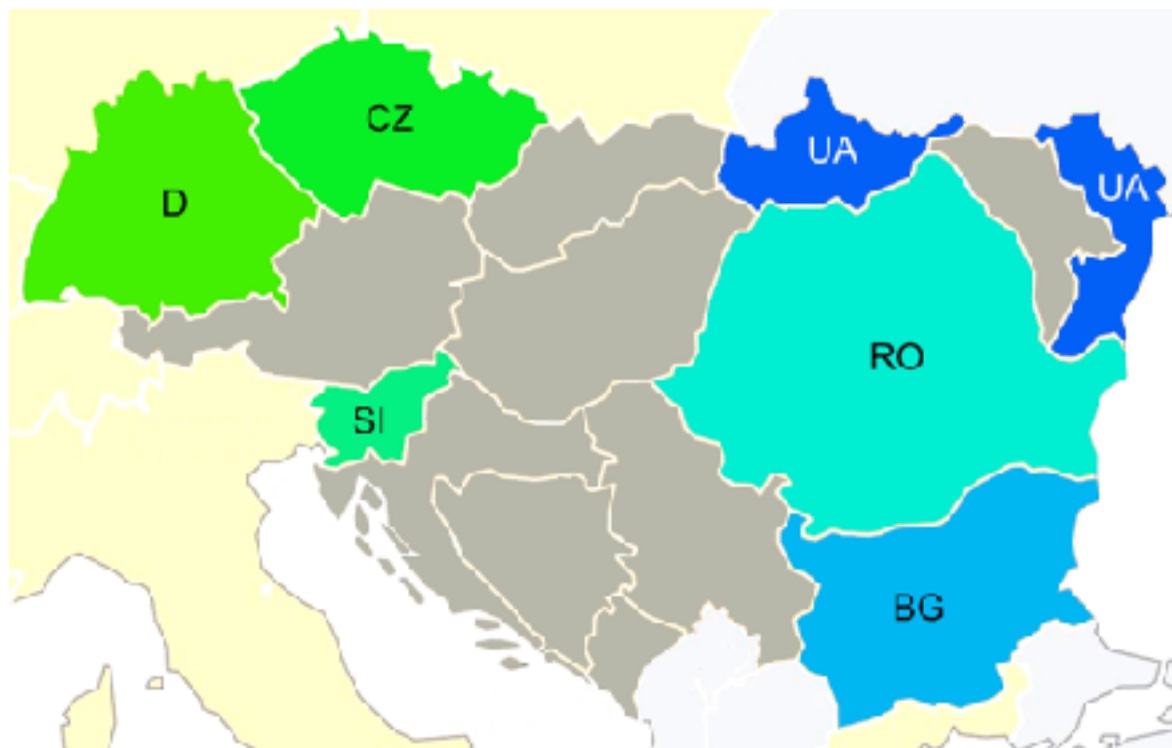
Lea Pfaeffel
Alexander Kurz

Technical University of Munich
School of Medicine
Munich, Germany

A stream of cooperation

A growing network

DANDEC-1 (2013-2015)



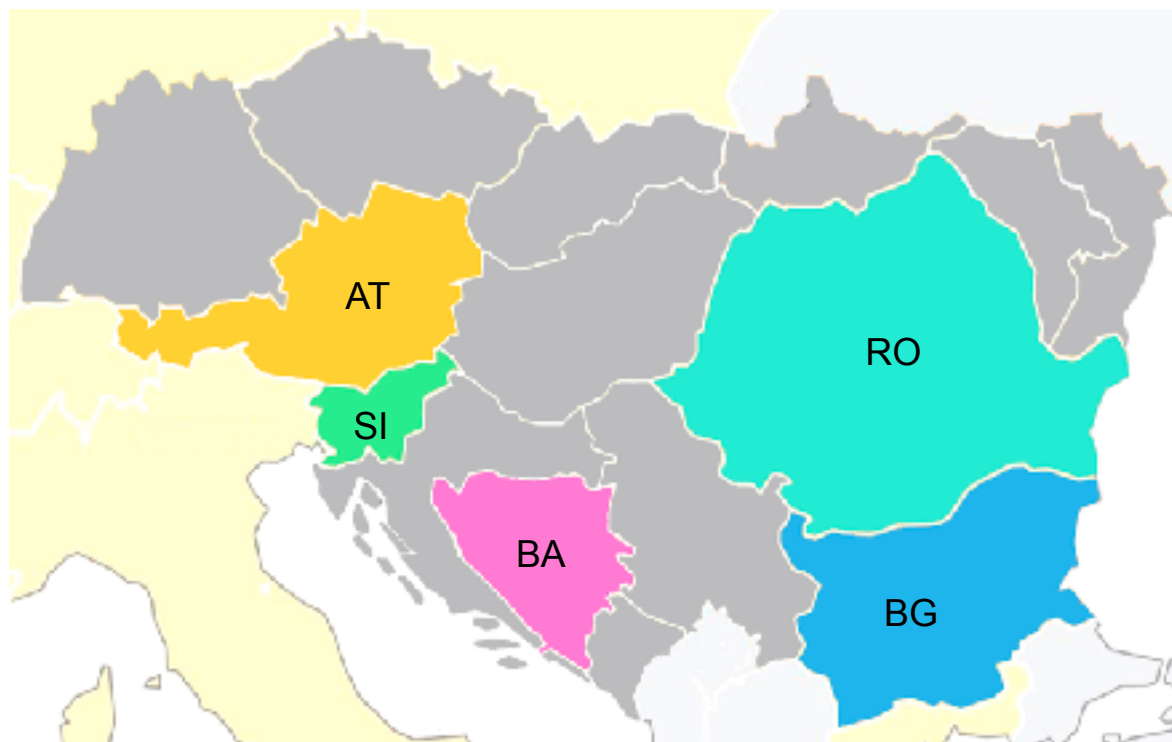
DANDEC-2 (2016-2017)



Bundesministerium
für Bildung
und Forschung

Supporting activities

Outreach to policy makers (2017)



Dementia Master Classes (2017-2019)

Workshops on multiprofessional management of dementia

- Podgorica, ME
- Belgrade, RS
- Sarajevo, BA (2x)
- Tirana, AL (2x)
- Skopje, NMK
- Zagreb, HR



Analysis

Solution

Network

Neuropsychiatric Disease and Treatment
 DOWNGRESS
 OPEN ACCESS
 ORIGINAL RESEARCH

Dementia care in the Danube Region. A multi-national expert survey

Gyula Halász, László Schwab, Iván Halász, Mária G. Kőrösi, Mária Róbert, Érika Szabó, Tibor Kovács, Tímea Kovács, Róbert Kőrösi, János Dóka-Schmidt, Károly Mészáros, Alexander Kurt

On behalf of the Danubian Network for Dementia Education Care (DANDEC) Consortium

*U.P. Mészáros, Department of Neurology, Medical University of Debrecen, Debrecen, Hungary; *L. Schwab, Department of Neurology, Medical University of Debrecen, Debrecen, Hungary; *I. Halász, Department of Neurology, Medical University of Debrecen, Debrecen, Hungary; *M. G. Kőrösi, Department of Neurology, Medical University of Debrecen, Debrecen, Hungary; *M. Róbert, Department of Neurology, Medical University of Debrecen, Debrecen, Hungary; *É. Szabó, Department of Neurology, Medical University of Debrecen, Debrecen, Hungary; *T. Kovács, Department of Neurology, Medical University of Debrecen, Debrecen, Hungary; *T. Kovács, Department of Neurology, Medical University of Debrecen, Debrecen, Hungary; *R. Kőrösi, Department of Neurology, Medical University of Debrecen, Debrecen, Hungary; *J. Dóka-Schmidt, Department of Neurology, Medical University of Debrecen, Debrecen, Hungary; *K. Mészáros, Department of Neurology, Medical University of Debrecen, Debrecen, Hungary; *A. Kurt, Department of Neurology, Medical University of Debrecen, Debrecen, Hungary

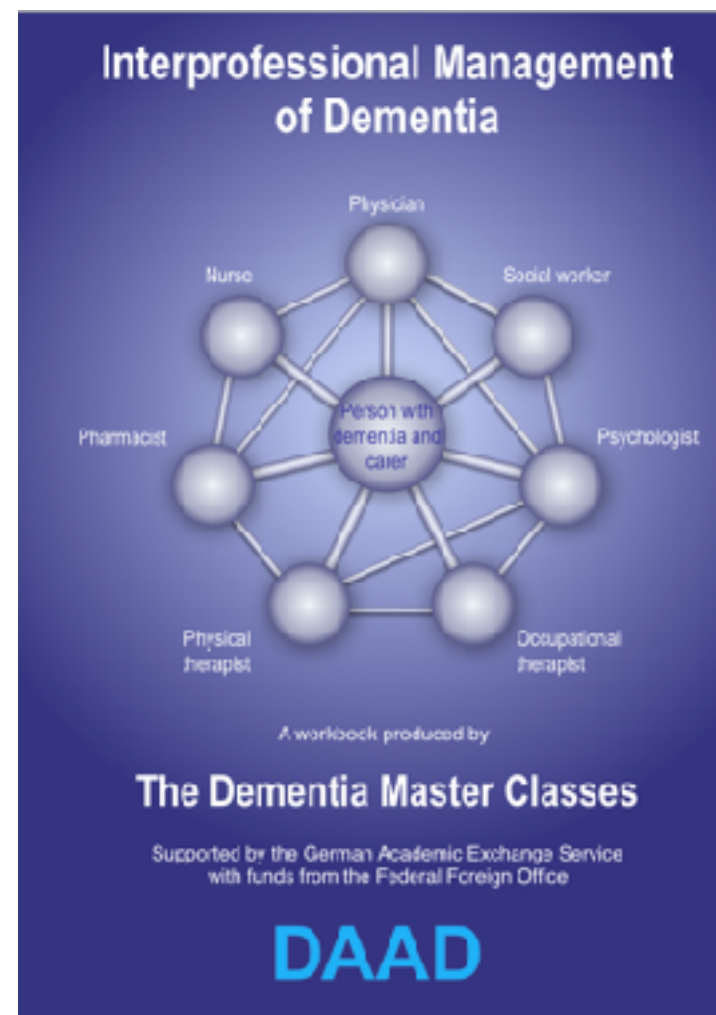
Correspondence: Alexander Kurt, Centre for Cognitive Disorders at the Department of Psychiatry and Psychology, Medical University of Debrecen, Debrecen, Hungary; E-mail: kurt.alexander@med.uni-debrecen.hu

This article was published in the following Open Peer Review journals:
 Neuropsychiatric Disease and Treatment

Background: Dementia is a particularly severe social challenge in several countries of the Danube Region due to higher-than-average increase in population longevity, demographic increase of the elderly dependency ratio, and relative reduced migration of health care professionals. A survey was conducted among dementia experts to obtain a deeper understanding of the dementia care structures and services in this geographical area, and to identify the educational needs of health care professionals, and the availability of assistive technology. **Methods and results:** A structured questionnaire was sent out to 15 leading dementia experts/clinicians in 10 Danube Region countries, learning about professional groups involved in dementia care, availability and reinforcement of services, inclusion of dementia in professional education and training, acceptability of Internet-based education, and availability of assistive technology. **The authors are the survey respondents.** **Results:** The majority of individuals with dementia receive care in the community rather than in institutions. The roles of medical specialties are disparate. General practitioners usually identify dementia symptoms while specialists contribute most to clinical diagnosis and treatment. Health care professionals, particularly those who work closely with patients and carers, have limited access to dementia-specific education and training. The greatest need for dementia-specific education is seen for general practitioners and nurses. An Internet-based education and skill-building program is considered to be equivalent to traditional face-to-face but offer advantages in terms of convenience of access. Assistive technology is available in countries of the Danube Region but is significantly underused. **Conclusions:** Dementia care in the Danube Region can be improved by an educational and skill-building program for health care professionals who work in the frontline of dementia care. Such a program should also attempt to enhance interdisciplinary and intersectoral collaboration, to intensify the interaction between primary care and specialists, and to promote the implementation of assistive technology. **Keywords:** dementia, Danube Region, expert survey, dementia care structures, education, assistive technology

Introduction

The Danube Region is a functional area defined by its river basin. It extends over 14 states, among them 7 EU-member states (Germany, Austria, the Czech Republic, Slovakia, Hungary, Slovenia, Croatia, Bulgaria, and Romania) and 7 countries which are not presently EU-members (Serbia, Montenegro, Bosnia and Herzegovina, the Ukraine, and Moldova). The Danube Region has a total population of 180 million. In socio-economic regard, the region showed disparity since it included not only some of the most affluent but also some of the poorest regions in the European Union¹. The prevalence of dementia among people aged 60 years and older is not uniform across



- A collaborative transnational initiative
- To improve dementia care
- To enhance the quality of life of people with dementia and their carers
- To contribute to the development and implementation of national dementia plans
- 20 partners in 10 countries
- Funded by the European Regional Development Fund (ERDF) and the Instrument for Pre-Accession Assistance (IPA)



Interreg
Danube Transnational Programme
INDEED

Innovation for Dementia in the Danube Region

www.interreg-danube.eu/indeed

Danube Transnational Programme	Budget: 1 726 514,27€ Call number: Call 2	Start date: 01-07-2018 End date: 30-06-2021
--------------------------------	--	--

Project co-funded by the European Regional Development Fund (ERDF) and the Instrument for Pre-Accession Assistance (IPA)

The project addresses three major gaps in dementia care:

- Low knowledge and skills about dementia among health and social care professionals → **INDEED educates**
- Insufficient interprofessional collaboration and coordination → **INDEED connects**
- Lack of dementia-specific services and facilities → **INDEED innovates**

INDEED educates

provides knowledge and skills to all professional groups involved in dementia care, complementing occupation-specific education

CAMPUS



INDEED connects

enhances the collaboration among health & social care professionals, promotes the use of available services and facilities

CONNECT



INDEED innovates

stimulates entrepreneurial engagement in dementia care by an advisory service featuring business models & good-practice examples

COACH

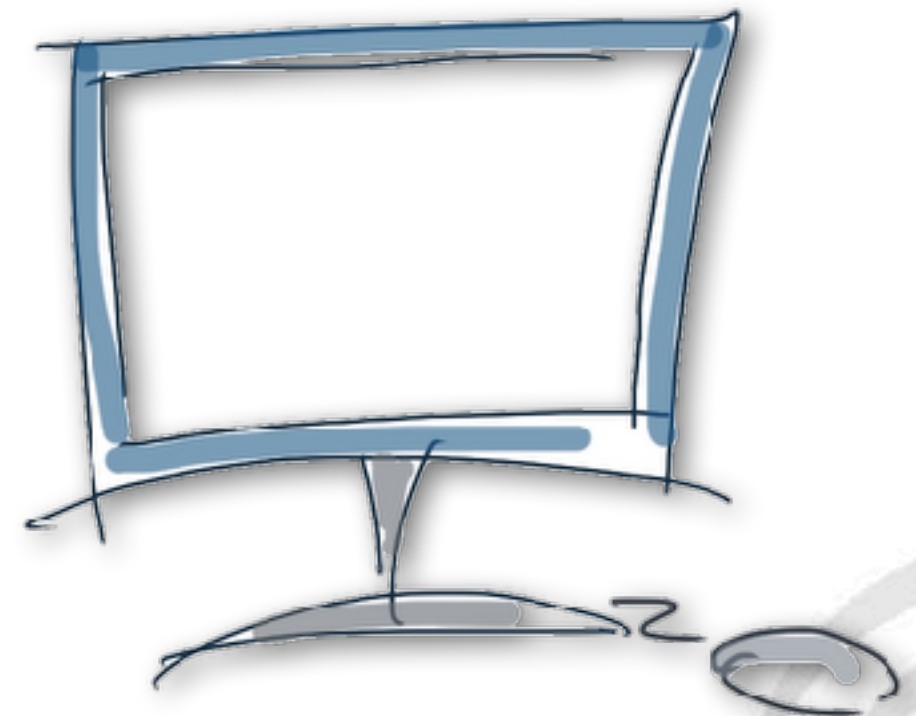


Materials for traditional presentations and workshops



blended learning

Online multimedia platform



- available in 5 languages
- field-tested in pilot actions

Workshops



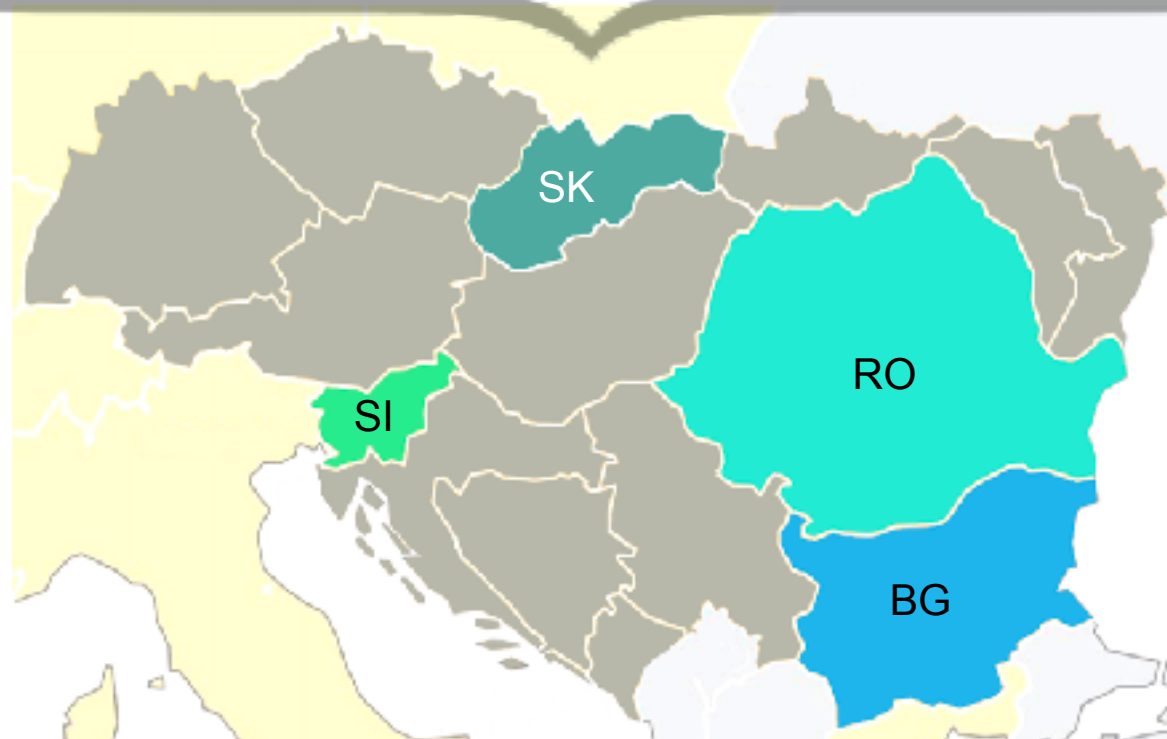
Online platform



Public events



In four countries



In urban and rural regions

**Move beyond
pilot borders**

**Provide through
patient org's &
universities**

**Secure political
support**



Univerza v Ljubljani



UNIVERSITY OF
BUCHAREST



UNIVERZITA
KARLOVA



Thank you!